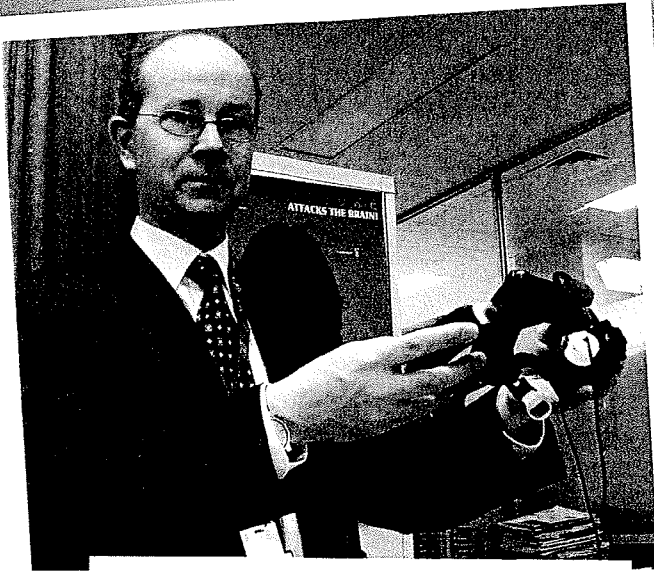


High definition pictures guide new stroke research



injury can lead to stroke in some cases – mainly because of damage to the artery leading to clot formation.”

Due to various complicating factors differing from patient to patient, Richard said that it was difficult to determine the likelihood of stroke. “Patients are placed on various medications in an attempt to prevent stroke but the choice of drug is not particularly precise and some medications increase the risk of bleeding,” he said. “Until very recently most were not detected at all until they had already had a stroke.”

The study is testing the suitability of Transcranial Doppler as a diagnostic tool in trauma patients with injuries to the head and neck. The advanced ultrasound machine displays a coloured graph of blood flow in the arteries, and any clots travelling up into the brain give a sharp interruption to the normal signal, which is easily seen and heard. An open, bicycle helmet-like frame allows continuous application of an ultrasound probe to the temple and reliable recording of the arterial signal.

“The ultimate aim of this research is to reduce the number of patients who recover from traumatic injury only to suffer a stroke,” Richard said. “The results delivered by Transcranial Doppler should allow us to administer the right intervention for the patients with the highest risk.”

Champagne and footy for palliative care

The smooth sounds of jazz and flowing champagne set the scene for a footy-themed Spring Champagne Brunch at Melbourne Park recently.

Organised by the community group Disha, the event raised funds for Mental Health, The Royal Melbourne Hospital and The Alfred's Palliative Care Service.

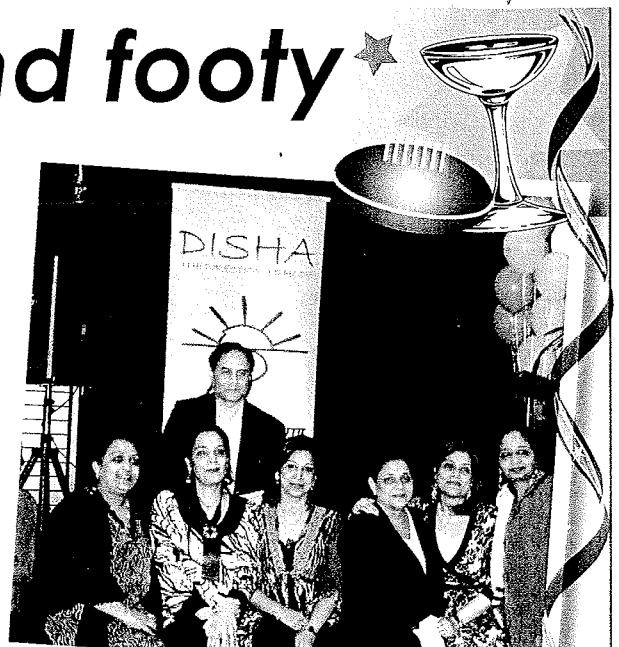
The crowd was treated to a cultural feast beginning with a dance performance to the much-feted footy theme song, *Up There Cazaly*. The brunch also included inspirational speakers from business and health professions, as well as an auction and raffle.

Major IT corporate sponsor, Satyam, presented \$3700 to The Alfred, although the total funds raised for the Hospital is still to be determined. All proceeds at The Alfred will go towards palliative care equipment, including a pressure relief electronic chair/bed that allows a patient

to recline comfortably and also helps them to stand up.

Disha founder, Tara Chandramouli, has a particular reason to support palliative care. “We want to help The Alfred's Palliative Care Service in memory of my younger brother, Boney Dhar, who spent his last few days there and was looked after by the fantastic nurses,” she said.

This is the second event held by Disha for The Alfred, after last year's Bollywood-themed dinner dance which raised more than \$10,000 towards a new fiberoptic bronchoscope for assessing lung cancer patients.



The Disha team is working to support palliative care at The Alfred.